

## Indication for use:

PerQseal<sup>®</sup> Elite Closure Device is indicated for:

The percutaneous sealing of a common femoral arteriotomy in patients following interventional therapeutic endovascular procedures created with sheath sizes 14 - 22 F (arteriotomy up to 26 F).

The PerQseal Elite Introducer is intended to provide access to the femoral vasculature and facilitate the introduction of the PerQseal Elite Closure Device.

# Consistently Secure Closure

100% bio-absorbable, patch based closure



Up to 26F Arteriotomies



PerQseal <sup>®</sup> Elite	
Catalogue Number	Contents
DP4-P1-2-G	PerQseal Elite Closure Device + PerQseal Elite Introducer Sheath

The PerQseal Elite Closure Device and PerQseal Elite Introducer are CE mark approved. 0123

To check the Eudamed database for information on the PerQseal Elite device please use the following reference. Basic UDI-DI: 539153318DP4FA1VCDV7 <https://ec.europa.eu/tools/eudamed> (when available)

## Customer Service

t: +31 73 3035511 f: +31 73 3690583 e: [vivasure@healthlinkeurope.com](mailto:vivasure@healthlinkeurope.com)

Vivasure Medical Limited, Parkmore Business Park West, Galway, Ireland, H91 V3KP

w: [www.vivasuremedical.com](http://www.vivasuremedical.com)

© Copyright 2025 Vivasure Medical Limited –All rights reserved. PerQseal<sup>®</sup> is a registered trademark of Vivasure Medical Limited. PerQseal<sup>®</sup> Elite is not available for sale in the United States.

## Predictable Performance and Consistently Secure Closure

The PerQseal<sup>®</sup> Elite Single-use device for 14-22 F sheaths (arteriotomy up to 26 F) large-bore vascular closure, offers a 100% bio-absorbable patch-based approach and a safe and intuitive solution to the challenges of large-bore percutaneous closure.

### Intuitive Device

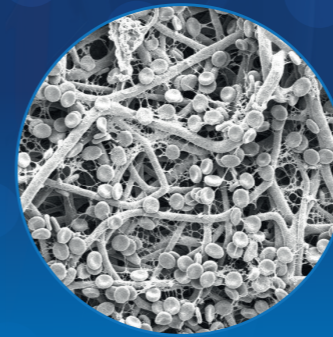
- Minimal deployment steps
- One device per closure
- No pre-procedural steps

### Improved Deliverability and Performance

- 0.35" guidewire compatible
- Safety wire access maintained
- Improved sheath access

## Seal and Heal from Inside<sup>3</sup>

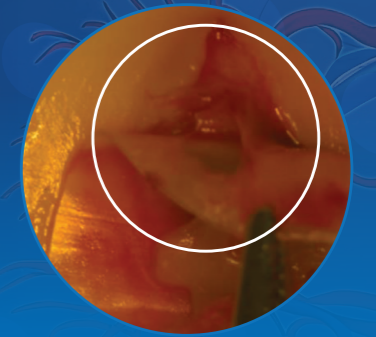
Unique Patch Design Utilizes Body's Healing Mechanism



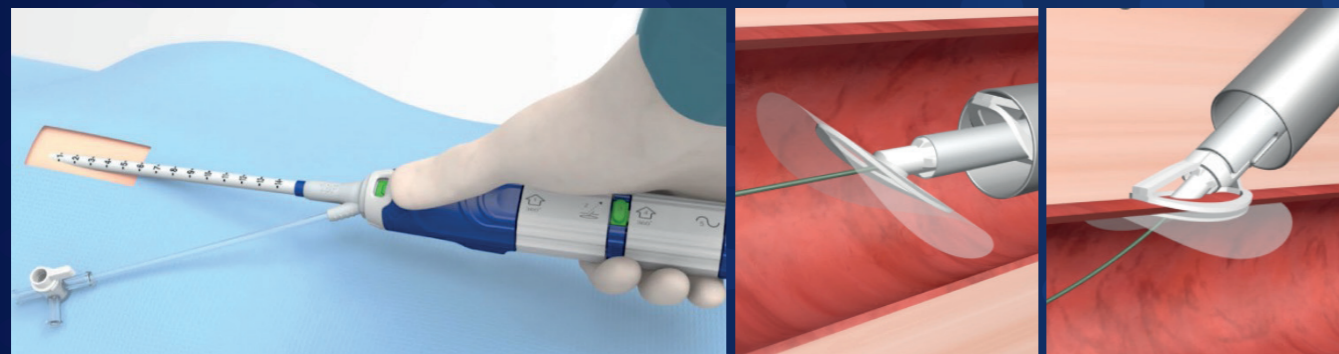
Textured layer traps blood cells and platelets when delivered to the blood vessel



Platelets activated when brought into contact with exposed collagen fibres at the wound site



Platelets aggregate and form a physical bond between the patch and the arteriotomy site<sup>4</sup>



### Seal with Confidence

- External fixation enhances compression and seal of implant
- Closes from inside, minimizing bleeding into tissue tract
- Low rates of hematomas and pseudo-aneurysms<sup>1</sup>

### 100% bio-absorbable patch

- Fully bio-absorbed in 6 months
- Adapts to a variety of vessel and tissue tract conditions
- Returns vessel to natural state<sup>2</sup>

## Leave Nothing Behind<sup>3</sup>

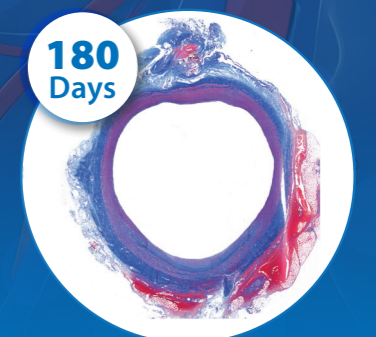
100% Bio-absorbable Solution



32 Days  
Implant fully encapsulated



91 Days  
Implant extra-arterial - vessel remodelling



180 Days  
Implant fully absorbed - vessel restored

1. FRONTIER V PerQseal Technology data on file at Vivasure Medical  
2. Pre-clinical data on file at Vivasure Medical

3. Pre-clinical data on file at Vivasure Medical  
4. Patch explanted at 24 hours